

MVASI® is a medicine for the treatment of: Metastatic colorectal cancer (mCRC); Advanced non-squamous non-small cell lung cancer (NSCLC); Recurrent glioblastoma (rGBM); Metastatic renal cell carcinoma (mRCC); Advanced cervical cancer (CC); Ovarian Cancer (OC).

PATIENT AND CAREGIVER BROCHURE

TAKE THE NEXT STEP WITH MVASI®

EXPLORE OUR EDUCATIONAL GUIDE

- Learn more about your diagnosis
- Learn about treatment with MVASI®



*Patient portrayals.

YOUR DIAGNOSIS

Important Safety Information

Possible serious side effects

Everyone reacts differently to MVASI® therapy. So, it's important to know what the side effects are. **Although some people may have a life-threatening side effect, most do not.** Your doctor will stop treatment if any serious side effects occur. **Be sure to contact your health care team if there are any signs of these side effects.**

- **GI perforation.** A hole that develops in your stomach or intestine. Symptoms include pain in your abdomen, nausea, vomiting, constipation, or fever
- **Abnormal passage in the body.** This type of passage—known as a fistula—is an irregular connection from one part of the body to another and can sometimes be fatal
- **Wounds that don't heal.** A cut made during surgery can be slow to heal or may not fully heal. MVASI® should not be used for at least 28 days before or after surgery and until surgical wounds are fully healed
- **Serious bleeding.** This includes vomiting or coughing up blood; bleeding in the stomach, brain, or spinal cord; nosebleeds; and vaginal bleeding. If you recently coughed up blood or had serious bleeding, be sure to tell your doctor

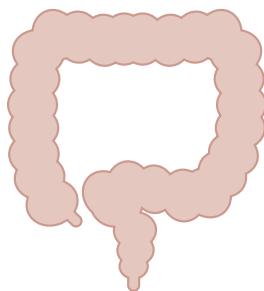
Please see the full **Important Safety Information** on pages 20–21, and accompanying **Prescribing Information**.

AMIGEN®

WHAT IS METASTATIC COLORECTAL CANCER (mCRC)?

Your doctor has said that you have a type of cancer called mCRC

Colorectal cancer starts with a tumor in your colon or rectum. If the cancer spreads to other parts of the body, it is called mCRC, or Stage 4 colorectal cancer.¹



mCRC is divided into three categories:²

STAGE 4a

Cancer has spread to one area or organ that is not near the colon and/or rectum, such as the liver, lung, or a distant lymph node.

STAGE 4b

Cancer has spread to more than one area or organ that is not near the colon and/or rectum, such as the liver, lung, or a distant lymph node.

STAGE 4c

Cancer has spread to the tissue that lines the wall of the abdomen and may have spread to other areas or organs.

Your treatment team is there to help

Because mCRC can impact the lives of you and your loved ones, it is important to work closely with your treatment team.

If you have questions, reach out to your treatment team directly for more information.

Indications: Metastatic Colorectal Cancer (mCRC)

MVASI® is approved to treat metastatic colorectal cancer (mCRC) for:

- First- or second-line treatment in combination with intravenous fluorouracil-based chemotherapy
- Second-line treatment when used with fluoropyrimidine-based (combined with irinotecan or oxaliplatin) chemotherapy after cancer progresses following a first-line treatment that includes MVASI®

MVASI® is not approved for use after the primary treatment of colon cancer that has not spread to other parts of the body.

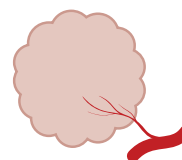
HOW CAN MY mCRC BE TREATED?

There is a treatment for your mCRC called MVASI® (em-VAH-see). It is:

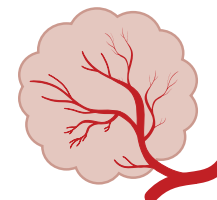
- **APPROVED** by the FDA to treat mCRC. MVASI® is also known by its chemical name, bevacizumab-awwb (bev-uh-SIZZ-oo-mab).³
- **A BIOLOGIC**, which is a drug made from a living cell. Biologic medicines are used to treat many conditions.^{4,5}

MVASI® works with your body to starve the tumor^{3,6}

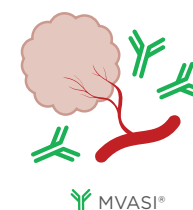
1. Some types of cancer develop into tumors.



2. As the tumor grows, it causes the body to create blood vessels to feed it.



3. MVASI® blocks the formation of new blood vessels. This could starve the tumor.*



*However, in a study of mCRC patients who continued on Avastin® for second-line treatment after a first-line treatment that included Avastin®, tumors did not shrink.



YOU CAN ASK YOUR TREATMENT TEAM:
Now that I know I have mCRC, what are my next steps?

FDA = Food and Drug Administration.

Important Safety Information Possible serious side effects (cont'd)

- **Severe high blood pressure.** Blood pressure that severely spikes or shows signs of affecting the brain. Blood pressure should be monitored every 2 to 3 weeks while on MVASI® and after stopping treatment

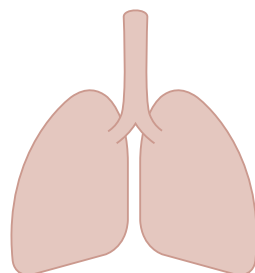


Please see the full **Important Safety Information** on pages 20-21, and accompanying **Prescribing Information**.

WHAT IS NON-SQUAMOUS NON-SMALL CELL LUNG CANCER (NSCLC)?

Your doctor has said that you have a type of cancer called non-squamous NSCLC

NSCLC starts in your lungs. Like other cancers, it may grow and spread to other parts of your body.⁷



There are three main types of NSCLC:⁷

Adenocarcinomas

make up about 40% of lung cancers. They usually occur in smokers and they are also the most common lung cancer seen in nonsmokers.

Squamous cell (epidermoid) carcinomas

are a type of NSCLC usually found inside the airways of the lungs.

Large cell (undifferentiated) carcinomas

can be found anywhere in the lungs. They tend to grow and spread quickly, which can make them more difficult to treat.

Your treatment team is there to help

Because NSCLC can impact the lives of you and your loved ones, it is important to work closely with your treatment team.

If you have questions, reach out to your treatment team directly for more information.

Indications (cont'd): Advanced Non-Squamous Non-Small Cell Lung Cancer (NSCLC)

MVASI®, in combination with carboplatin and paclitaxel, is approved to treat advanced non-squamous non-small cell lung cancer (NSCLC) in people who have not received chemotherapy for their advanced disease.

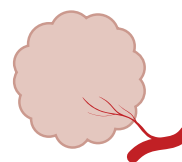
HOW CAN MY NON-SQUAMOUS NSCLC BE TREATED?

There is a treatment for your non-squamous NSCLC called MVASI® (em-VAH-see). It is:

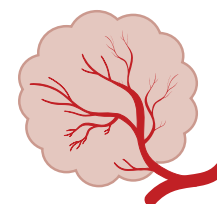
- **APPROVED** by the FDA to treat non-squamous NSCLC. MVASI® is also known by its chemical name, bevacizumab-awwb (bev-uh-SIZZ-oo-mab).³
- **A BIOLOGIC**, which is a drug made from a living cell. Biologic medicines are used to treat many conditions.^{4,5}

MVASI® works with your body to starve the tumor^{3,6}

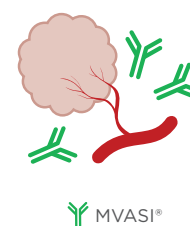
1. Some types of cancer develop into tumors.



2. As the tumor grows, it causes the body to create blood vessels to feed it.



3. MVASI® blocks the formation of new blood vessels. This could starve the tumor.



YOU CAN ASK YOUR TREATMENT TEAM:

Now that I know I have NSCLC, what are my next steps?

FDA = Food and Drug Administration.

Important Safety Information

Possible serious side effects (cont'd)

- **Kidney problems.** These may be caused by too much protein in the urine and can sometimes be fatal

Please see the full **Important Safety Information** on pages 20-21, and accompanying **Prescribing Information**.



WHAT IS GLIOBLASTOMA?

Your doctor has said that you have a type of cancer called glioblastoma

Glioblastoma is a cancer of the nervous system, which is the medical term for the brain and spinal cord.

Unlike cancers that start in other parts of the body, tumors that start in the nervous system rarely spread to other organs, but they can still grow and spread into other nearby areas of the brain.⁸



According to the World Health Organization (WHO), there are four grades of brain and spinal cord tumors:⁸

GRADE I Tumors that typically grow slowly and do not infiltrate other nearby tissues. Can often be cured with surgery.

GRADE II Tumors that tend to grow slowly but can grow into nearby brain tissue. May eventually start growing faster and are likely to return after surgery.

GRADE III Tumors have a more abnormal appearance when viewed under a microscope. Can grow into nearby brain tissue and may need treatment in addition to surgery.

GRADE IV Tumors are the fastest growing. They usually need the most aggressive treatment.

Your treatment team is there to help

Because glioblastoma can impact the lives of you and your loved ones, it is important to work closely with your treatment team.

If you have questions, reach out to your treatment team directly for more information.

Indications (cont'd): Recurrent Glioblastoma (rGBM)

MVASI® is approved to treat recurrent glioblastoma in adults.

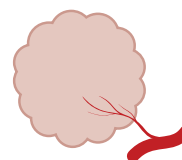
HOW CAN MY GLIOBLASTOMA BE TREATED?

There is a treatment for your rGBM called MVASI® (em-VAH-see). It is:

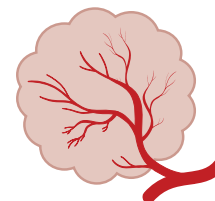
- **APPROVED** by the FDA to treat rGBM. MVASI® is also known by its chemical name, bevacizumab-awwb (bev-uh-SIZZ-oo-mab).³
- **A BIOLOGIC**, which is a drug made from a living cell. Biologic medicines are used to treat many conditions.^{4,5}

MVASI® works with your body to starve the tumor^{3,6}

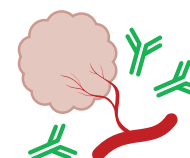
1. Some types of cancer develop into tumors.



2. As the tumor grows, it causes the body to create blood vessels to feed it.



3. MVASI® blocks the formation of new blood vessels. This could starve the tumor.



MVASI®



YOU CAN ASK YOUR TREATMENT TEAM:
Now that I know I have recurrent glioblastoma, what are my next steps?

FDA = Food and Drug Administration.

Important Safety Information

Possible serious side effects (cont'd)

- **Infusion-related reactions.** These were uncommon with the first dose (less than 3% of patients). 0.4% of patients had severe reactions. Infusion-related reactions include high blood pressure or severe high blood pressure that may lead to stroke, trouble breathing, decreased oxygen in red blood cells, a serious allergic reaction, chest pain, headache, tremors, and excessive sweating. Your doctor or nurse will monitor you for signs of infusion-related reactions

Please see the full **Important Safety Information** on pages 20-21, and accompanying **Prescribing Information**.



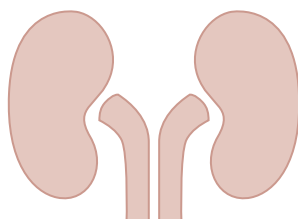
RECURRENT
GLIOBLASTOMA

WHAT IS METASTATIC RENAL CELL CARCINOMA (mRCC)?

Your doctor has said that you have a type of cancer called mRCC

Renal cell carcinoma is the most common type of kidney cancer. It occurs when cancer cells form in the tubules of the kidney. Tubules are tiny tubes in your kidney that help filter waste products from your blood and make urine.^{9,10}

It is called mRCC, or metastatic renal cell carcinoma, if cancer cells spread to other parts of the body.¹¹



mRCC occurs in one of three ways:¹¹

Cancer cells in your kidney spread into the tissue around the tumor.

The cancer moves from your kidney to your lymphatic system, which has vessels throughout the body.

Kidney cancer cells enter the bloodstream and are carried and deposited to another organ or area of your body.

Your treatment team is there to help

Because mRCC can impact the lives of you and your loved ones, it is important to work closely with your treatment team.

If you have questions, reach out to your treatment team directly for more information.

Indications (cont'd): Metastatic Renal Cell Carcinoma (mRCC)

MVASI®, used with interferon alfa, is approved to treat metastatic kidney cancer (mRCC).

HOW CAN MY mRCC BE TREATED?

There is a treatment for your mRCC called MVASI® (em-VAH-see). It is:

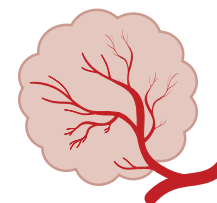
- **APPROVED** by the FDA to treat mRCC. MVASI® is also known by its chemical name, bevacizumab-awwb (bev-uh-SIZZ-oo-mab).³
- **A BIOLOGIC**, which is a drug made from a living cell. Biologic medicines are used to treat many conditions.^{4,5}

MVASI® works with your body to starve the tumor^{3,6}

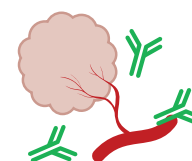
1. Some types of cancer develop into tumors.



2. As the tumor grows, it causes the body to create blood vessels to feed it.



3. MVASI® blocks the formation of new blood vessels. This could starve the tumor.



MVASI®



YOU CAN ASK YOUR TREATMENT TEAM:
Now that I know I have mRCC, what are my next steps?

FDA = Food and Drug Administration.

Important Safety Information Possible serious side effects (cont'd)

- **Severe stroke or heart problems.** These may include blood clots, mini-stroke, heart attack, chest pain, and your heart may become too weak to pump blood to other parts of your body (congestive heart failure). These can sometimes be fatal

Please see the full **Important Safety Information** on pages 20-21, and accompanying **Prescribing Information**.



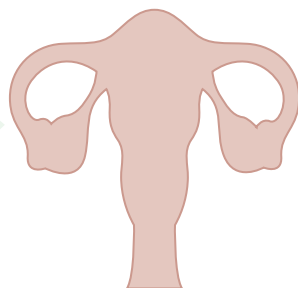
METASTATIC
RENAL CELL
CARCINOMA

WHAT IS CERVICAL CANCER (CC)?

Your doctor has said that you have cervical cancer

Cervical cancer begins in the cells lining the cervix, which is the lower part of the uterus.

Cancer occurs when the cervix develops precancerous cells that gradually turn into cancerous cells, which can spread to other areas of the body.¹²



Cervical cancers and cervical precancers are classified by how they look under a microscope:¹²

Squamous cell carcinomas

make up about 9 out of 10 cervical cancers. They develop on the outside of the cervix.

Adenocarcinomas

take into account most other cervical cancers. Cervical adenocarcinomas seem to have become more common in the past 20–30 years.

Adenosquamous carcinomas

are less common cervical cancers that have features of both squamous cell carcinomas and adenocarcinomas.

Your treatment team is there to help

Because cervical cancer can impact the lives of you and your loved ones, it is important to work closely with your treatment team.

If you have questions, reach out to your treatment team directly for more information.

Indications (cont'd): Advanced Cervical Cancer (CC)

MVASI®, in combination with paclitaxel and cisplatin or paclitaxel and topotecan, is approved to treat persistent, recurrent, or metastatic cancer of the cervix.

HOW CAN MY CERVICAL CANCER BE TREATED?

There is a treatment for your cervical cancer called MVASI® (em-VAH-see). It is:

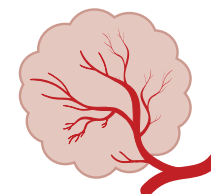
- **APPROVED** by the FDA to treat cervical cancer. MVASI® is also known by its chemical name, bevacizumab-awwb (bev-uh-SIZZ-oo-mab).³
- **A BIOLOGIC**, which is a drug made from a living cell. Biologic medicines are used to treat many conditions.^{4,5}

MVASI® works with your body to starve the tumor^{3,6}

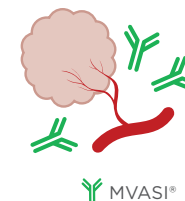
1. Some types of cancer develop into tumors.



2. As the tumor grows, it causes the body to create blood vessels to feed it.



3. MVASI® blocks the formation of new blood vessels. This could starve the tumor.



YOU CAN ASK YOUR TREATMENT TEAM:

Now that I know I have cervical cancer, what are my next steps?

FDA = Food and Drug Administration.

Important Safety Information

Possible serious side effects (cont'd)

- **Nervous system and vision problems.** Signs include headache, seizure, high blood pressure, sluggishness, confusion, and blindness



Please see the full **Important Safety Information** on pages 20–21, and accompanying **Prescribing Information**.

IS MVASI® RIGHT FOR ME?

Proven effective

MVASI® (bevacizumab-awwb) is a biosimilar to another drug called Avastin® (bevacizumab). MVASI® has been tested with patients worldwide. It has been shown to be as effective as Avastin® and have similar side effects. Most patients tested took MVASI® for up to 19 weeks.¹³

Bevacizumab has been used over the past 15 years to treat many types of cancer, including forms of colorectal cancer, non-squamous non-small cell lung cancer, glioblastoma, renal cell cancer, and cervical cancer.¹⁴



Amgen has a wealth of experience in bringing biologics to patients

MVASI® is made by Amgen, a world leader in cancer treatment. For 40 years, we have been developing biologics and bringing treatments to millions of people with cancer.

40
YEARS
OF EXPERIENCE

MANUFACTURER OF
17 BIOLOGIC
MEDICINES*

We are deeply committed to supporting patients throughout their treatment journey. You can expect Amgen to deliver quality products on time and provide support every step of the way.

*Current as of July 2019.



YOU CAN ASK YOUR TREATMENT TEAM:

- What results can I expect with MVASI®?
- What resources can I use to select an infusion center?



AMGEN IS HERE FOR YOU WITH
RESOURCES AND SUPPORT.
PLEASE SEE PAGES 18-19 FOR
MORE INFORMATION

For more information about MVASI®, visit [MVASI.com/patients](https://www.mvasi.com/patients)

Important Safety Information

Possible serious side effects

- **GI perforation.** A hole that develops in your stomach or intestine. Symptoms include pain in your abdomen, nausea, vomiting, constipation, or fever

Please see the full **Important Safety Information** on pages 20-21, and accompanying **Prescribing Information**.



IS MVASI® RIGHT FOR ME? (cont'd)

A few things to keep in mind as you start MVASI®

Now that you know more about your cancer and MVASI®, you may have some questions about starting on this course of therapy.



MVASI® MAY BE PRESCRIBED WITH CHEMOTHERAPY³

You and your doctor will discuss your MVASI® dose and type of chemotherapy. Your treatment team will explain which combination of treatments is right for you.



MVASI® IS GIVEN THROUGH AN IV INFUSION³

- You will receive MVASI® every 2 or 3 weeks for as long as you need it.³
- MVASI® is given in the same amount and for the same length of time as Avastin®, another bevacizumab.^{3,15}

The points above offer only an outline of what you might expect when starting on MVASI®.

Your doctor will ultimately make these treatment decisions with you. If your treatment plan is not clear, please speak with your treatment team.

Important Safety Information

Possible serious side effects (cont'd)

- **Abnormal passage in the body.** This type of passage—known as a fistula—is an irregular connection from one part of the body to another and can sometimes be fatal

Day-of-treatment reminders



BRING A SNACK TO EAT AND SOMETHING TO DO WHILE YOU WAIT



ON ARRIVAL, YOU'LL BE EXAMINED, WEIGHED, AND ASSESSED



YOU MAY BE PROVIDED SOME MEDICINE TO HELP PREVENT POSSIBLE SIDE EFFECTS



YOU'LL GET YOUR IV INFUSION WITH MVASI®



AFTER YOUR INFUSION, YOUR TREATMENT TEAM WILL GIVE YOU A CHECKUP

Please see the full **Important Safety Information** on pages 20–21, and accompanying **Prescribing Information**.



WHAT ELSE SHOULD I KNOW ABOUT MVASI®?

Regular blood pressure monitoring is important

Per standard treatment with MVASI®, and similar drugs like Avastin® (bevacizumab), you will receive regular blood pressure checkups. These checkups will occur throughout the course of your treatment.³



**YOUR BLOOD PRESSURE
WILL BE MONITORED
EVERY 2 TO 3 WEEKS³**



YOU CAN ASK YOUR TREATMENT TEAM:
Why is it important to monitor my blood pressure?

Important Safety Information

Side effects seen most often

In clinical studies across different types of cancer, some patients experienced the following side effects:

- High blood pressure
- Too much protein in the urine
- Nosebleeds
- Bleeding
- Back pain
- Headache
- Taste change
- Dry skin
- Inflammation of the skin
- Inflammation of the nose
- Watery eyes

MVASI® is not for everyone

Talk to your doctor if you are:

- **Undergoing surgery.** MVASI® should not be used for 28 days before or after surgery and until surgical wounds are fully healed

MVASI® is a biologic medicine called a biosimilar

MVASI® is a biosimilar to Avastin® (bevacizumab). It was shown to have similar efficacy and side effects to Avastin®.^{3,14}

MVASI® is carefully made and tested. This is to make sure it is similar in efficacy and side effects to the existing biologic (also called the reference product).^{3,4,14}

A biosimilar is different from a “generic”⁴

Biosimilars are made to be almost identical to the original biologic drug. But it is not possible to make exact copies of biologics because they are made from living cells.

Biosimilars go through rigorous testing to demonstrate that they provide results similar to the reference product. MVASI® is made by Amgen, a world leader in biologic treatments.

Important Safety Information (cont'd)

- **Pregnant or think you are pregnant.** Data have shown that MVASI® may harm your unborn baby. Use birth control while on MVASI®. If you stop MVASI®, you should keep using birth control for 6 months before trying to become pregnant
- **Planning to become pregnant.** Taking MVASI® could cause a woman's ovaries to stop working and may impair her ability to have children
- **Breastfeeding.** Breastfeeding while on MVASI® may harm your baby, therefore, women should not breastfeed during and for 6 months after taking MVASI®

For more information about your treatment or condition, talk to your doctor.

You may report side effects to the FDA at **1-800-FDA-1088** or **www.fda.gov/medwatch**.

You may also report side effects to Amgen at 1-800-772-6436.

Please see the full **Important Safety Information** on pages 20-21, and accompanying **Prescribing Information**.



WHAT IF I NEED ADDITIONAL SUPPORT?

Whether you're a patient or a caregiver, we're here to help

If you've been prescribed MVASI®, you might have questions about how your medicine may be covered by your insurance. That's why we created Amgen Assist 360™—to support you in every way we can, so you can focus on what's most important to you.



Whatever type of insurance you have—even if you have none—your Amgen Reimbursement Counselor can help you understand how MVASI® may be covered, and can refer you to programs that may be able to help you afford it, such as **Amgen FIRST STEP™**.

Amgen Reimbursement Counselors can help you understand:

INSURANCE COVERAGE

CO-PAY COSTS

DEDUCTIBLE COSTS



REFERRALS TO RESOURCES FOR DAY-TO-DAY LIVING*

We can help refer you to independent nonprofit organizations that may provide you with community resources, one-on-one counseling services, and local support groups.

To speak to an Amgen Reimbursement Counselor call: **1-888-4ASSIST** (888-427-7478)
• Monday to Friday 9:00 am to 8:00 pm ET or visit **AmgenAssist360.com**



*Resources include referrals to independent nonprofit patient assistance programs. Eligibility for resources provided by independent nonprofit patient assistance programs is based on the nonprofits' criteria. Amgen has no control over these programs and provides referrals as a courtesy only.



The Amgen FIRST STEP™ program can help eligible commercially insured patients cover their out-of-pocket prescription costs, including deductible, co-insurance, and co-payment.*

- **\$0 out of pocket** for first dose
- **\$5 out of pocket** for subsequent doses, up to the program maximum in assistance per calendar year. See **AmgenFIRSTSTEP.com** for terms and conditions
- **No income eligibility** requirement

Call **1-888-65-STEP1** (1-888-657-8371) • Monday to Friday • 9:00 am to 8:00 pm ET, or visit **AmgenFIRSTSTEP.com**

The Amgen FIRST STEP™ Prepaid MasterCard is issued by Comerica Bank pursuant to license by MasterCard International Incorporated. No cash or ATM access. MasterCard is a registered trademark of MasterCard International Incorporated. This card can be used only to cover the co-payment for eligible prescriptions covered under the program at participating merchant locations where Debit MasterCard is accepted.

*Terms, conditions, and program maximums apply. This program is not open to patients receiving prescription reimbursement under any federal, state, or government-funded healthcare program. Not valid where prohibited by law.

Please see the full **Important Safety Information** on pages 20-21, and accompanying **Prescribing Information**.



IMPORTANT SAFETY INFORMATION

Possible serious side effects

Everyone reacts differently to MVASI® therapy. So, it's important to know what the side effects are. **Although some people may have a life-threatening side effect, most do not.** Your doctor will stop treatment if any serious side effects occur. **Be sure to contact your health care team if there are any signs of these side effects.**

- **GI perforation.** A hole that develops in your stomach or intestine. Symptoms include pain in your abdomen, nausea, vomiting, constipation, or fever
- **Abnormal passage in the body.** This type of passage—known as a fistula—is an irregular connection from one part of the body to another and can sometimes be fatal
- **Wounds that don't heal.** A cut made during surgery can be slow to heal or may not fully heal. MVASI® should not be used for at least 28 days before or after surgery and until surgical wounds are fully healed
- **Serious bleeding.** This includes vomiting or coughing up blood; bleeding in the stomach, brain, or spinal cord; nosebleeds; and vaginal bleeding. If you recently coughed up blood or had serious bleeding, be sure to tell your doctor
- **Severe high blood pressure.** Blood pressure that severely spikes or shows signs of affecting the brain. Blood pressure should be monitored every 2 to 3 weeks while on MVASI® and after stopping treatment
- **Kidney problems.** These may be caused by too much protein in the urine and can sometimes be fatal
- **Infusion-related reactions.** These were uncommon with the first dose (less than 3% of patients). 0.4% of patients had severe reactions. Infusion-related reactions include high blood pressure or severe high blood pressure that may lead to stroke, trouble breathing, decreased oxygen in red blood cells, a serious allergic reaction, chest pain, headache, tremors, and excessive sweating. Your doctor or nurse will monitor you for signs of infusion-related reactions
- **Severe stroke or heart problems.** These may include blood clots, mini-stroke, heart attack, chest pain, and your heart may become too weak to pump blood to other parts of your body (congestive heart failure). These can sometimes be fatal
- **Nervous system and vision problems.** Signs include headache, seizure, high blood pressure, sluggishness, confusion, and blindness

Side effects seen most often

In clinical studies across different types of cancer, some patients experienced the following side effects:

- | | |
|---------------------------------|----------------------------|
| • High blood pressure | • Taste change |
| • Too much protein in the urine | • Dry skin |
| • Nosebleeds | • Inflammation of the skin |
| • Bleeding | • Inflammation of the nose |
| • Back pain | • Watery eyes |
| • Headache | |

MVASI® is not for everyone

Talk to your doctor if you are:

- **Undergoing surgery.** MVASI® should not be used for 28 days before or after surgery and until surgical wounds are fully healed
- **Pregnant or think you are pregnant.** Data have shown that MVASI® may harm your unborn baby. Use birth control while on MVASI®. If you stop MVASI®, you should keep using birth control for 6 months before trying to become pregnant
- **Planning to become pregnant.** Taking MVASI® could cause a woman's ovaries to stop working and may impair her ability to have children
- **Breastfeeding.** Breastfeeding while on MVASI® may harm your baby, therefore, women should not breastfeed during and for 6 months after taking MVASI®

For more information about your treatment or condition, talk to your doctor.

You may report side effects to the FDA at 1-800-FDA-1088 or www.fda.gov/medwatch. You may also report side effects to Amgen at 1-800-772-6436.

Please see full Product Information for additional important safety information.

INDICATIONS

Metastatic Colorectal Cancer (mCRC)

MVASI® is approved to treat metastatic colorectal cancer (mCRC) for:

- First- or second-line treatment in combination with intravenous fluorouracil-based chemotherapy
- Second-line treatment when used with fluoropyrimidine-based (combined with irinotecan or oxaliplatin) chemotherapy after cancer progresses following a first-line treatment that includes MVASI®

MVASI® is not approved for use after the primary treatment of colon cancer that has not spread to other parts of the body.

Advanced Non-Squamous Non-Small Cell Lung Cancer (NSCLC)

MVASI®, in combination with carboplatin and paclitaxel, is approved to treat advanced non-squamous non-small cell lung cancer (NSCLC) in people who have not received chemotherapy for their advanced disease.

Recurrent Glioblastoma (rGBM)

MVASI® is approved to treat recurrent glioblastoma in adults.

Metastatic Renal Cell Carcinoma (mRCC)

MVASI®, used with interferon alfa, is approved to treat metastatic kidney cancer (mRCC).

Advanced Cervical Cancer (CC)

MVASI®, in combination with paclitaxel and cisplatin or paclitaxel and topotecan, is approved to treat persistent, recurrent, or metastatic cancer of the cervix.

Ovarian Cancer (OC)

MVASI®, in combination with carboplatin and paclitaxel, followed by MVASI® alone, is used for the treatment of patients with advanced (Stage III or IV) epithelial ovarian, fallopian tube, or primary peritoneal cancer following initial surgery.

MVASI®, in combination with paclitaxel, pegylated liposomal doxorubicin or topotecan, is approved to treat platinum-resistant recurrent epithelial ovarian, fallopian tube or primary peritoneal cancer in women who received no more than two prior chemotherapy treatments.

MVASI®, either in combination with carboplatin and paclitaxel or with carboplatin and gemcitabine, followed by MVASI® alone, is approved for the treatment of patients with platinum-sensitive recurrent epithelial ovarian, fallopian tube, or primary peritoneal cancer.

Please see accompanying **Prescribing Information**.



MVASI® IS HERE FOR YOU

A proven treatment

MVASI® proven similar to Avastin® in:	MVASI®
EFFECTIVENESS ¹³	✓
SIDE EFFECT PROFILE ¹³	✓
DOSING ADMINISTERED EVERY 2 OR 3 WEEKS ³	✓

See how we can help you understand:

- Insurance coverage
- Co-pay costs
- Deductible costs



FOR SUPPORT CALL **1-888-4ASSIST** (1-888-427-7478)
OR VISIT **AMGENASSIST360.COM**

Please see accompanying full **Prescribing Information**.

References: **1.** Fightcolorectalcaner.org. About colorectal cancer. www.fightcolorectalcaner.org/prevent/about-colorectal-cancer/. Accessed June 13, 2019. **2.** American Cancer Society. Colorectal cancer stages. www.cancer.org/cancer/colon-rectal-cancer/detection-diagnosis-staging/staged.html. Accessed June 13, 2019. **3.** MVASI® (bevacizumab-awwb) Prescribing Information, Amgen. **4.** US Food and Drug Administration. Biosimilars: more treatment choices and innovation. www.fda.gov/ForConsumers/ConsumerUpdates/ucm436399.htm. Accessed June 13, 2019. **5.** US Food and Drug Administration. What are “biologics” questions and answers. www.fda.gov/AboutFDA/CentersOffices/OfficeofMedicalProductsandTobacco/CBER/ucm133077.htm. Accessed June 13, 2019. **6.** Apte RS, Chen DS, Ferrara N. VEGF in signaling and disease: beyond discovery and development. *Cell*. 2019;176:1248-1264. **7.** American Cancer Society. What is non-small cell lung cancer? www.cancer.org/cancer/non-small-cell-lung-cancer/about/what-is-non-small-cell-lung-cancer.html. Accessed June 13, 2019. **8.** American Cancer Society. Types of brain and spinal cord tumors in adults. www.cancer.org/cancer/brain-spinal-cord-tumors-adults/about/types-of-brain-tumors.html. Accessed June 13, 2019. **9.** American Cancer Society. What is kidney cancer? www.cancer.org/cancer/kidney-cancer/about/what-is-kidney-cancer.html. Accessed June 13, 2019. **10.** National Cancer Institute. Renal cell cancer treatment – patient version. General information about renal cell cancer. www.cancer.gov/types/kidney/patient/kidney-treatment-pdq#link/_1. Accessed June 13, 2019. **11.** National Cancer Institute. Renal cell cancer treatment – patient version. Stages of renal cell cancer. www.cancer.gov/types/kidney/patient/kidney-treatment-pdq#section/_26. Accessed June 13, 2019. **12.** American Cancer Society. What is cervical cancer? www.cancer.org/cancer/cervical-cancer/about/what-is-cervical-cancer.html. Accessed June 13, 2019. **13.** Thatcher N, Goldschmidt JH, Thomas M, et al. Efficacy and safety of the biosimilar ABP 215 compared with bevacizumab in patients with advanced nonsquamous non-small cell lung cancer (MAPLE): a randomized, double-blind, phase III study. *Clin Cancer Res*. 2019;25:2088-2095. **14.** Drugs.com. Avastin approval history. www.drugs.com/history/avastin.html. Accessed June 13, 2019. **15.** Avastin® (bevacizumab) Prescribing Information, Genentech USA.

Avastin® (bevacizumab) is a registered trademark of Genentech USA, Inc.



MVASI® is a registered trademark of Amgen Inc.

© 2019, 2021 Amgen Inc. All rights reserved. USA-OBUB-80141 11/21

